



# International Journal of Innovative Research in Science Engineering and Technology (IJIRSET)

*(A Monthly, Peer Reviewed, Refereed, Scholarly Indexed, Open Access Journal)*



**Impact Factor: 9.935**

**Volume 15, Issue 5, May 2026**

# The Future of AI in Healthcare

Anjan G<sup>1</sup>, Mr Naseerhusen Ankalagi<sup>2</sup>

PG Student, Dept. of MCA, City Engineering College, Bengaluru, India<sup>1</sup>

Assistant Professor, Dept. of MCA, City Engineering College, Bengaluru, India<sup>2</sup>

**ABSTRACT:** Artificial Intelligence is rapidly transforming the healthcare sector by improving the accuracy, efficiency, and accessibility of medical services. AI's potential in healthcare depends on its capacity to assist doctors in diagnosis, predict diseases at an early stage, personalize treatment plans, and automate administrative tasks. AI-powered technologies such like natural language processing, deep learning, and machine learning, and robotics are being extensively used in areas like medical imaging, medication development, remote patient monitoring, and virtual health aides. These innovations can reduce human error, lower healthcare costs, and enhance patient outcomes. In addition, AI can assist in analyzing vast amounts of medical data to recognize trends that support better clinical decisions. But issues include data privacy, ethical concerns, lack of transparency, and regulatory issues must be addressed for successful implementation. As technology develops further, AI is anticipated to develop into an essential partner for medical practitioners as opposed to a replacement. This paper discusses the future scope, applications, benefits, Regarding difficulties with AI in healthcare, highlighting its potential to create a smarter, faster, and more patient-centered healthcare system.

**KEYWORDS:** Machine learning, healthcare, and Deep learning, artificial intelligence, and medicine Diagnosis, Predictive Analytics, Personalized Medicine, Robotics, Telemedicine, Remote Patient Monitoring, Clinical Decision Support and Drug Discovery, Medical Imaging, Data Privacy, Smart Healthcare Systems

## I. INTRODUCTION

Healthcare is among the most important sectors in society, as it directly affects the quality of human life and well-being. With the increasing global population, rising healthcare costs, shortage of medical professionals, and increasing need for improved medical services, traditional healthcare systems face many challenges. In recent years, artificial intelligence, has become a potent technology that can help solve many of these problems by improving efficiency, accuracy, and accessibility in healthcare services. Artificial intelligence is the capacity of computers and computer systems to carry out operations that often call for human intelligence, including learning, reasoning, problem-solving, decision-making, and understanding language. Machine learning, deep learning, and natural language processing are examples of AI technology., computer vision, and robotics. These technologies are being incorporated into healthcare to support doctors, nurses, researchers, and administrators in various medical activities.

One of the AI's main uses in healthcare is disease diagnosis and early detection. Medical photos can be analyzed by AI systems. such as MRIs, CT scans, and X-rays with high accuracy, helping doctors identify diseases such as heart disease, cancer, and neurological disorders at an early stage. Early diagnosis can greatly enhance treatment success rates and reduce complications. Additionally, AI is utilized in forecasting analytics, where patient data is analyzed to calculate the probability of future diseases and recommend preventive measures.

Another important area is personalized medicine. Every patient has unique genetic, environmental and lifestyle elements that affect treatment outcomes. AI can process large amounts of patient data to recommend customized treatment plans and medications according to each individual needs. This improves the effectiveness of treatment while reducing side effects. AI is also transforming hospital management and administrative operations. Many healthcare organizations use Virtual assistants and chatbots driven schedule appointments, answer patient queries, manage records, and provide health guidance. This reduces the workload of healthcare staff and improves patient satisfaction. In addition, wearable devices and remote monitoring systems powered by AI allow continuous tracking of patient health conditions, especially for elderly people and those with chronic diseases. AI's potential in healthcare also includes faster drug development and advanced robotic surgeries. AI is able to evaluate scientific material to find possible medicines in less time compared to traditional methods. Surgeons can benefit from robotic systems in performing precise and minimally invasive procedures, leading to quicker recovery and fewer risks.

## II. METHODOLOGY

The methodology of this seminar focuses on understanding how AI, or artificial intelligence, can be applied in healthcare systems and how it may transform medical services in the future. To conduct this study, data is gathered from trustworthy sources, such as journals, books, research papers, healthcare websites, and case studies. The collected data is analyzed to comprehend the working process, benefits, challenges, and future possibilities AI inside healthcare.

### 1. Data Collection

The first step of the methodology is gathering information related to Artificial Intelligence and healthcare. Secondary data sources such as scientific journals, conference papers, articles, and reports from healthcare organizations are used. These sources provide updated knowledge about AI technologies, their uses, and current developments in hospitals and medical institutions.

### 2. Study of AI Technologies

The next step is studying the major AI technologies used in healthcare. Among these technologies are deep learning, natural language processing, and machine learning, expert systems, and robotics. Systems can gain knowledge from medical machine learning data and produce predictions. Deep learning is useful in image analysis such as detecting diseases from scans. Natural language processing helps in understanding patient records and clinical documents.

### 3. Analysis of Healthcare Applications

After understanding the technologies, different AI uses in healthcare are studied. AI is used in disease diagnosis, early detection of illnesses, robotic surgeries, drug discovery, virtual assistants, patient monitoring, and hospital management. Each application is examined to understand how AI improves speed, accuracy, and decision-making in healthcare services.

### 4. Performance Evaluation

The performance of AI systems is evaluated by comparing them with traditional healthcare methods. Factors such as accuracy, time-saving, reduction of medical errors, treatment efficiency, and patient satisfaction are considered. This helps in understanding the practical advantages of AI implementation in real healthcare environments.

**5. Identification of Challenges** The methodology also includes studying the challenges faced during AI adoption in healthcare. Important issues such as data privacy, cybersecurity, lack of transparency, high implementation cost, and ethical concerns are analyzed. These challenges need proper solutions for successful use of AI systems.

### 6. Future Scope Analysis

The final step is analyzing future developments of AI in healthcare. Technologies such as smart hospitals, wearable health devices, remote diagnosis systems, personalized medicine, and AI-assisted surgeries are studied. This helps in predicting how AI will improve healthcare in the coming years.

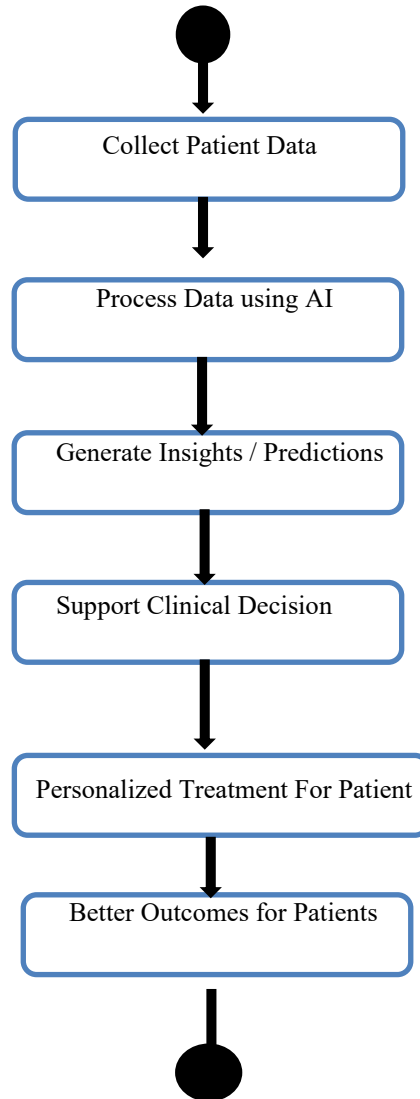


Fig 3.1 Activity Diagram

### III. SYSTEM DESIGN

The system design of AI's Future in Healthcare is developed to create an intelligent healthcare platform that supports doctors, hospitals, and patients by using Artificial Intelligence technologies. The main purpose of the system is to collect patient data, analyze it accurately, provide faster diagnosis, and improve treatment quality. This system combines medical data management, AI algorithms, cloud computing, and real-time monitoring into one integrated healthcare solution. The system begins with the input stage, where patient-related information is collected from different sources. These sources include laboratory reports and electronic health records, X-rays and MRIs are examples of medical imagery scans, wearable technology, and patient-entered symptoms. All this data is important because AI systems require quality information to make accurate predictions and recommendations.

After data collection, the information enters the data preprocessing stage. In this stage, raw data is cleaned, arranged, and converted into a suitable format. Missing values are corrected, duplicate records are removed, and unnecessary data is filtered. Medical images may also be enhanced for better analysis. This step is necessary because clean and organized data increases the performance of AI models.

#### IV. SYSTEM ARCHITECTURE AND DESIGN

The system architecture and design of AI's Future in Healthcare is based on an integrated smart healthcare model where Artificial Intelligence technologies are connected with hospitals, patients, doctors, and medical databases. The architecture is intended to improve the caliber of healthcare services by enabling fast diagnosis, efficient treatment planning, continuous monitoring, and secure data management. It provides a structured framework in which Every System components communicate with one another. to deliver accurate and real-time healthcare solutions.

The architecture begins with the user interaction layer, which acts as the entry point of the system. This layer includes patients, doctors, hospital staff, and administrators who access the system through mobile applications, web portals, or hospital management software. Patients use the system to register, upload reports, view prescriptions, and track their health progress. Doctors use the platform to access patient records, review AI-generated reports, and manage treatment procedures. Administrative users control appointments, billing, resource allocation, and system operations.

The next component is the data acquisition layer, where healthcare information is collected from multiple sources. These Electronic Health Records (EHR) are one source., pathology lab reports, diagnostic machines, wearable health devices, pharmacy records, and patient symptoms entered manually. Medical imaging devices such as MRI, CT scan, ultrasound, and X-ray systems also provide important data to the system. This layer ensures that both historical and real-time data are available for intelligent analysis.

Once data is collected, it is transferred to the data preprocessing layer. In this stage, the raw information is cleaned, filtered, and transformed into a standardized format. Duplicate entries are removed, incomplete data is corrected, and inconsistent records are normalized. Medical images may be resized or enhanced for better recognition by AI models. Preprocessing is necessary because high-quality data improves the reliability and performance of the system.

#### V. IMPLEMENTATION

The application of AI's Future in Healthcare involves converting The suggested system architecture into a practical working healthcare platform using modern software technologies, Artificial Intelligence models, cloud infrastructure, and connected medical devices. The main objective of implementation aims to create an intelligent system that can collect patient data, analyze medical information, assist doctors in diagnosis, and improve treatment quality through automation and intelligence.

The implementation process begins with the development of the user interface module. Web applications and mobile applications are created for patients, doctors, and administrators. Patients can register into the system, upload reports, book appointments, and view prescriptions. Doctors can log in securely to access patient records, review AI-generated insights, and update treatment details. Administrators manage hospital operations, staff records, scheduling, and billing through a centralized dashboard. User-friendly interfaces are designed to ensure easy access and smooth operation.

The next step is implementing the database and cloud storage system. A secure database is created to keep medical histories and patient records, prescriptions, diagnostic reports, and hospital management data. Cloud platforms are used to maintain scalability, backup, and real-time access from different locations. Encryption techniques are applied to secure sensitive healthcare information and protect patient privacy. After storage setup, the data integration module is implemented. This module connects different healthcare data sources such as Electronic Health Records (EHR), wearable devices, laboratory systems, pharmacy databases, and imaging machines. APIs and communication protocols are utilized to exchange data between gadgets and healthcare platform. Real-time data synchronization helps doctors monitor patient conditions continuously.

#### VI. RESULTS AND DISCUSSION

Artificial Intelligence Integration in healthcare has produced encouraging results across diagnosis, arranging for treatment, keeping an eye on patients, and hospital management. Recent studies indicate that AI-powered systems are capable of analyzing vast amounts data medical data quicker and more precise than many traditional methods. In radiology, AI models have demonstrated excellent effectiveness in identifying diseases such as lung cancer, breast

cancer, and pneumonia through image analysis. This reduces diagnostic delays and supports doctors in making faster clinical decisions.

AI-powered predictive analytics has improved patient care as well. by identifying high-risk individuals before severe complications occur. For example, machine learning algorithms can forecast heart attacks, diabetic emergencies, and sepsis by examining patient history, vital signs, and laboratory reports. Early prediction allows timely intervention, which improves survival rates and reduces hospital admissions.

Another significant result is the use of AI in personalized medicine. By studying genetic information, lifestyle patterns, and treatment responses, AI can recommend customized therapies for patients. This approach increases efficacy of treatment while reducing adverse effects effects. In oncology, AI-assisted systems are helping physicians choose the most suitable chemotherapy or immunotherapy options.

## VII. CONCLUSION

Artificial Intelligence is transforming healthcare by improving accuracy, speed, and efficiency in medical services. From early disease detection and medical imaging to personalized treatment plans and remote patient monitoring, AI has the capacity to enhance patient results while lowering operational costs. It supports doctors in decision-making, minimizes human error, and enables faster diagnosis through advanced data analysis.

In the future, AI is anticipated to have a even greater role in predictive healthcare robotic surgery, virtual medical assistants, and smart hospital management systems. By integrating machine learning with natural language processing, and wearable technologies, Healthcare systems have the capacity to proactive and patient-centered.

## REFERENCES

1. World Health Organization, Artificial Intelligence Ethics and Governance for *Health*, Geneva, 2021.
2. National Institutes of Health, "Healthcare Artificial Intelligence: Applications and Opportunities," 2022.
3. Institute of Electrical and Electronics Engineers, "AI-Based Healthcare Systems and Future Trends," *IEEE Access*, vol. 10, pp. 11234–11250, 2023.
4. Elsevier, "Machine Learning in Clinical Decision Support Systems," *Journal of Biomedical Informatics*, vol. 118, 2022.
5. Springer Nature, "Deep Learning for Medical Image Analysis," *Health Information Science and Systems*, vol. 11, no. 4, 2023.
6. The Lancet, "Artificial Intelligence in Global Healthcare Delivery," vol. 401, pp. 455–462, 2023.
7. Nature Publishing Group, "AI and Personalized Medicine: Challenges and Progress," *Nature Medicine*, vol. 29, 2024.



INTERNATIONAL  
STANDARD  
SERIAL  
NUMBER  
INDIA



# INTERNATIONAL JOURNAL OF INNOVATIVE RESEARCH

IN SCIENCE | ENGINEERING | TECHNOLOGY

 9940 572 462  6381 907 438  [ijirset@gmail.com](mailto:ijirset@gmail.com)



[www.ijirset.com](http://www.ijirset.com)

Scan to save the contact details